

The Homepage

ELHABASHY LAB

[About](#) [People](#) [Services](#) [GitHub](#) [Citation](#) [Contact](#)

Welcome to

Interacting Species Database

The **ISDB Homepage** provides general information. You can scroll down for an overview, or click on “Services” to start exploring and analyzing the data.

ABOUT ISDB

The Interacting Species Database (ISDB) is a Comprehensive Resource for Ecological Interactions at the Molecular Level.

ISDB Services

ELHABASHY LAB

[About](#) [People](#) [Services](#) [GitHub](#) [Citation](#) [Contact](#)

SERVICES

Download

Click here to batch download the complete ISDB!

Search

Search your species or protein of interest for interactions!

Deposit

Contribute data to the ISDB with interspecies interactions!

TEAM



Hadeer Elhabashy

Junior Professor and Group Leader

University of Bayreuth
Max Planck Institute for Biology Tübingen



Michael Mederer

Former Master's student

University of Tuebingen



Anupam Gautam

Postdoctoral Researcher

Max Planck Institute for Biology Tübingen
University of Tübingen

The Services section consists of three main modules:

1. **Download** – Access and download the ISDB database.
2. **Search** – An interactive module for searching within the ISDB database.
3. **Deposit** – Submit and deposit your data into the ISDB database.



ISDB Database Download Module

ELHABASHY LAB

[About](#) [People](#) [Services](#) [GitHub](#) [Citation](#) [Contact](#)

DOWNLOAD

ISDB Downloads
Download the latest ISDB database files

S.No	Type	Description	Statistics	Download
1.	ISDB-DB (tsv)	TSV format	Total: 3,235,997 lines & 35Mb	Download
2.	ISDB-DB (csv)	CSV format	Total: 3,235,997 lines & 35Mb	Download

Showing 1 to 2 of 2 entries

Download – This page provides the ISDB database in TSV and CSV formats. Please use the download buttons to obtain your preferred format.

ISDB Search Module

ELHABASHY LAB

[About](#) [People](#) [Services](#) [GitHub](#) [Citation](#) [Contact](#)

SEARCH

Search ISDB 🔍
Choose a type and start typing (min. 2 characters).

Select Type:

Protein **Protein:**

Protein Interaction **Protein 1:** **Protein 2:**

Species **Species:**

Species Interaction **Species 1:** **Species 2:**

How to use

This search uses live suggestions. You don't need to type the full name.

- 1 Select a search type**
Protein, Protein Interaction, Species, or Species Interaction.
- 2 Start typing**
Suggestions appear after **2 characters**.
- 3 Pick from the dropdown**
Click a suggestion to select it.
- 4 Click Search**
You will be redirected to the results page.

Tips

For interactions, select both entries (1 and 2).
If you don't see results, try a shorter keyword or different spelling.
Use Protein search when you know a specific protein name;
use Species search for organism-level queries.

Search – Based on your preferred search type, enter your query. After typing two letters, suggestions will start to appear. For more details, please refer to the “How to Use” section on the right-hand side of the panel, which explains the search functionality.

ISDB Deposit Module

ELHABASHY LAB [About](#) [People](#) [Services](#) [GitHub](#) [Citation](#) [Contact](#)

Submit Your Data
Provide interspecies interaction data for review and inclusion in ISDB.

- Fill out the form below to submit interspecies interaction data.
- Please include your email so our team can contact you if we have questions.
- Fields marked with*are mandatory.
- Submissions with missing required data will not be accepted.

Bulk submissions
For spreadsheets or large tables, please contact us directly at [Elhabashylab \(@\) gmail.com](mailto:Elhabashylab@gmail.com).

Taxonomy ID 1 *	Organism 1 * (species scientific name):	Protein UniProt ID 1:
<input type="text"/>	<input type="text"/>	<input type="text"/>
Taxonomy ID 2 *	Organism 2 * (species scientific name):	Protein UniProt ID 2:
<input type="text"/>	<input type="text"/>	<input type="text"/>
Interaction Type *	Ontology ID:	Reference *:
<input type="text"/>	<input type="text"/>	<input type="text"/>

[Add another entry](#)

Your Email *

I agree to be contacted regarding this data submission.

Submit

Deposit – Fill in the required information, including your “email address, and click submit”. We will contact you after reviewing your entry.

If you have more than one entry, click “Add Another Entry” and provide the required details. You can also read the “Submit Your Data” section at the top before proceeding, or contact us if you encounter any issues.

Example Usage

SEARCH

Search ISDB
Choose a type and start typing (min. 2 characters).

Select Type:

- Protein
- Protein Interaction
- Species
- Species Interaction

Protein:

Type to search...

human

- 1433B_HUMAN
- 1433E_HUMAN
- 1433F_HUMAN
- 1433G_HUMAN
- 1433S_HUMAN
- 1433T_HUMAN

Search

Enter your query in the text box and select a suggestion from the dropdown list. Then, click the "Search" button.

How to use

This search uses live suggestions. You don't need to type the full name.

- Select a search type**
Protein, Protein Interaction, Species, or Species Interaction.
- Start typing**
Suggestions appear after 2 characters.
- Pick from the dropdown**
Click a suggestion to select it.
- Click Search**
You will be redirected to the results page.

Tips

For interactions, select both entries (1 and 2).

If you don't see results, try a shorter keyword or different spelling.

Use Protein search when you know a specific protein name; use Species search for organism-level queries.

Results

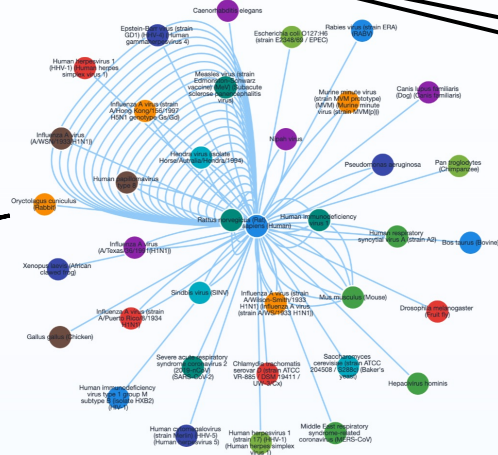
Search results

Organism Interaction Network

This graph is built from the same subset shown in the table. Duplicate edges are removed only when Organism A, Organism B, and Interaction Type are all identical. For smooth performance, only the first 500 unique edges are plotted.

Total search rows	Rows used in table/plot	Network nodes	Network edges shown
1,420	1,420	37	84

[Download PNG](#) [Download JPG](#) [Download JSON](#)



Statistics – Displays a summary of the query results, including the number of hits found, how many are used in the network and table, and the total number of nodes and edges.

Network plot.

You can download the displayed network in PNG or JPG formats, as well as the JSON data of the plot.

Network details
Click a node or an edge to see details here.

Results

ELHABASHY LAB [About](#) [People](#) [Services](#) [GitHub](#) [Citation](#) [Contact](#)

Organism Interaction Network

This graph is built from the same subset shown in the table. Duplicate edges are removed only when **Organism A**, **Organism B**, and **Interaction Type** are all identical. For smooth performance, only the first 500 unique edges are plotted.

Total search rows	Rows used in table/plot	Network nodes	Network edges shown
1,420	1,420	37	84

[Download PNG](#) [Download JPG](#) [Download JSON](#)

Edge details
Organism A: Rabies virus (strain ERA) (RABV)
Organism B: Homo sapiens (Human)
Interaction Type: association

When you click on an edge, it becomes red, and its details—such as the interacting organisms and interaction type—are displayed in the “Network Details Panel”.

Note – If the number of hits exceeds 10,000, only the first 10,000 results are displayed and used to construct the network due to browser limitations. Additionally, network generation stops once 500 edges are reached.

Results

ELHABASHY LAB

About People Services GitHub Citation Contact

Search results table

Browse, filter, and export the visible table data using the controls above the table.



Copy CSV Excel

50 entries per page

Search:

S.No	Taxonomy ID A	Taxonomy ID B	UniProt ID A	UniProt ID B	Organism A
1	10090	9606	P61588	P31946	Mus musculus (Mouse)
2	10090	9606	Q3U182	P31946	Mus musculus (Mouse)
3	10090	9606	Q61097	P31946	Mus musculus (Mouse)
4	10090	9606	Q61337	P31946	Mus musculus (Mouse)
5	380964	9606	Q9WPI5	P31946	Influenza A virus (A/Texas/36/1991(H1N1))
6	381518	9606	P03427	P31946	Influenza A virus (strain A/Wilson-Smith/1933 H1N1)
7	381518	9606	P03454	P31946	Influenza A virus (strain A/Wilson-Smith/1933 H1N1)
8	381518	9606	P03470	P31946	Influenza A virus (strain A/Wilson-Smith/1933 H1N1)
9	381518	9606	P05777	P31946	Influenza A virus (strain A/Wilson-Smith/1933 H1N1)
10	381518	9606	P05780	P31946	Influenza A virus (strain A/Wilson-Smith/1933 H1N1)
11	381518	9606	P15659	P31946	Influenza A virus (strain A/Wilson-Smith/1933 H1N1)
12	381518	9606	P15682	P31946	Influenza A virus (strain A/Wilson-Smith/1933 H1N1)

Tooltips are available in the table headers to help you understand the information displayed in each column. You can scroll horizontally and vertically within the table. By default, 50 entries are displayed per page, but you can adjust this using the dropdown menu.

Further, when you scroll down on the results page, you will see a table containing detailed information about all matching results or hits. This includes details such as source, database, references, and more.

The table can be downloaded in CSV or Excel format, or you can copy the data using the buttons provided at the top of the table.

Results

ELHABASHY LAB

About People Services GitHub Citation Contact

Search results table

Browse, filter, and export the visible table data using the controls above the table.

50 entries per page Search:

Copy CSV Excel

S.No	Taxonomy ID A	Taxonomy ID B	UniProt ID A	UniProt ID B	Organism A
1	10029	9606	Q920N5-1	O14734	Cricetulus griseus (Chinese hamster) (Cricetulus bar
2	10090	9606	P61327	Q96K37	Mus musculus (Mouse)
3	10090	9606	P61327	Q96L93	Mus musculus (Mouse)
4	10090	9606	P61327	Q96L93-6	Mus musculus (Mouse)
5	10090	9606	P61327	Q96R50	Mus musculus (Mouse)
6	10090	9606	P61327	Q9BRP8	Mus musculus (Mouse)
7	10090	9606	P61327	Q9BRP8-2	Mus musculus (Mouse)
8	10090	9606	P61327	Q9BSK4	Mus musculus (Mouse)
9	10090	9606	P61327	Q9H477	Mus musculus (Mouse)
10	10090	9606	P61327	Q9P2E2	Mus musculus (Mouse)
11	10090	9606	P61327	Q9P2E2-3	Mus musculus (Mouse)
12	10090	9606	P61327	Q9UBC3	Mus musculus (Mouse)
13	10090	9606	P61327	Q9UBC3-3	Mus musculus (Mouse)
14	10090	9606	P61327	Q9ULI4	Mus musculus (Mouse)
15	10090	9606	P61327	Q9UPZ3	Mus musculus (Mouse)
16	10090	9606	P61327	Q9Y559	Mus musculus (Mouse)
17	10090	9606	P61327	Q9Y6R4	Mus musculus (Mouse)
18	10090	9606	P61588	P25205	Mus musculus (Mouse)
19	10090	9606	P61588	P27348	Mus musculus (Mouse)

Showing 1 to 50 of 10,000 entries

« < 1 2 3 4 5 ... 200 > »

Download complete results

Note – If the number of results exceeds 10,000, only the first 10,000 are displayed in the table. The complete set of results can be downloaded using the button below, which appears only when the total exceeds 10,000.